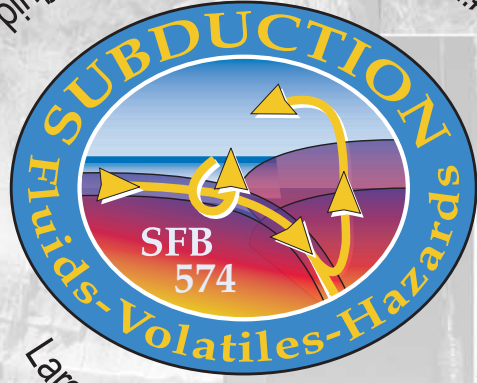


# Subduction workshop 2010

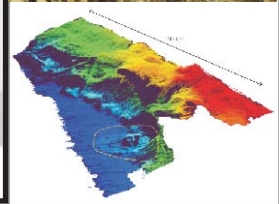
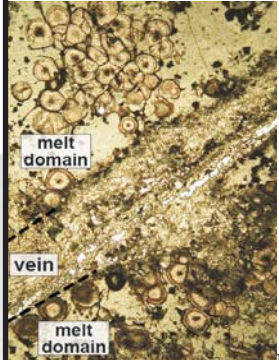
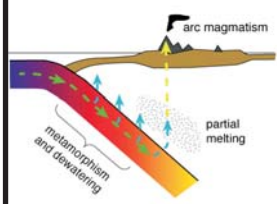
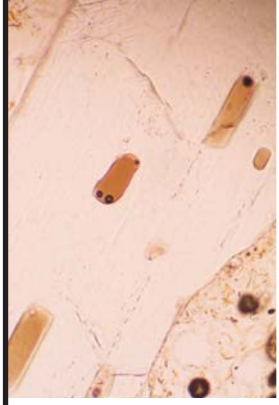
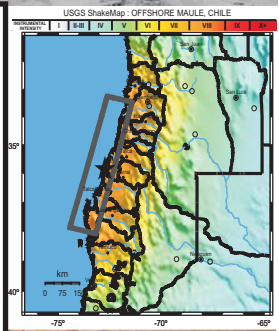
Nov. 4-7, 2010, Pucon, Chile



Inside the subducting slab  
Forearc-fluid relevant biological and geological processes  
Large-scale along-arc variations: structure, hazards  
Imaging and chemical tracing of fluid pathways  
Links between volcanism, seismicity, climate hazards  
arc magmatism, partial melting, metamorphism and dewatering  
The 2010 Earthquake

More information at:  
[sfb574.ifm-geomar.de/workshop-2010](http://sfb574.ifm-geomar.de/workshop-2010)

sponsored by





The Collaborative Research Center SFB 574 "Volatiles and Fluids in Subduction Zones" invites contributions to a

**Workshop on Subduction Zone Processes to be held Nov. 4-7, 2010, at Pucon, Chile.**

**Preliminary scientific topics are:**

- Forearc-fluid relevant biological and geological processes
- Inside the subducting slab
- Links between volcanism, seismicity, climate, hazards
- Imaging and chemical tracing of fluid pathways
- Large-scale along-arc variations: structure, geochemistry, volatiles
- The 2010 Earthquake

The final program of oral and poster presentations will be based on submitted contributions.

For continuously updated information visit [sfb574.ifm-geomar.de/workshop-2010](http://sfb574.ifm-geomar.de/workshop-2010) where you will also find a link to online registration.

**Deadline for abstract and registration: Wednesday Sept. 15, 2010**

Registration fee: 100 Euro covering icebreaker, coffee service, daily lunch, conference dinner

Upon registration you may choose between Single room (65 Euro per person per night) Double room (45 Euro per person per night) in Gran Hotel Pucon which is the meeting and accomodation place on the shore of lake Villarrica (affectionately remembered by participants of the 2004 IAVCEI General Assembly).

Limited funding is available to support student participation; please send your informal application (noting your scientific motivation and including a copy of your abstract as well as a supporting note by your supervisor) to Erna Lange at [elange@ifm-geomar.de](mailto:elange@ifm-geomar.de). The support comprises the registration fee and (double room) overnight costs.

**Post-meeting excursion:**

We are presently planning a 4-day excursion (Nov. 8-11) for a limited number of participants to Llaima and Lonquimay volcanoes as well as coastal platforms uplifted by earthquakes. This will require additional costs. See the web page for updated information.

**If you have questions, please contact:**

Armin Freundt [afreundt@ifm-geomar.de](mailto:afreundt@ifm-geomar.de) or Steffen Kutterolf [skutterolf@ifm-geomar.de](mailto:skutterolf@ifm-geomar.de)

